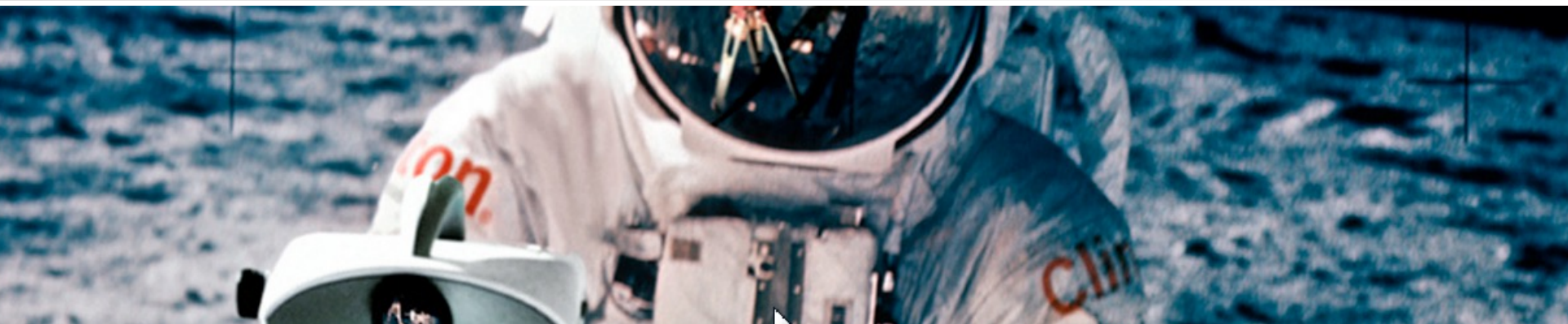
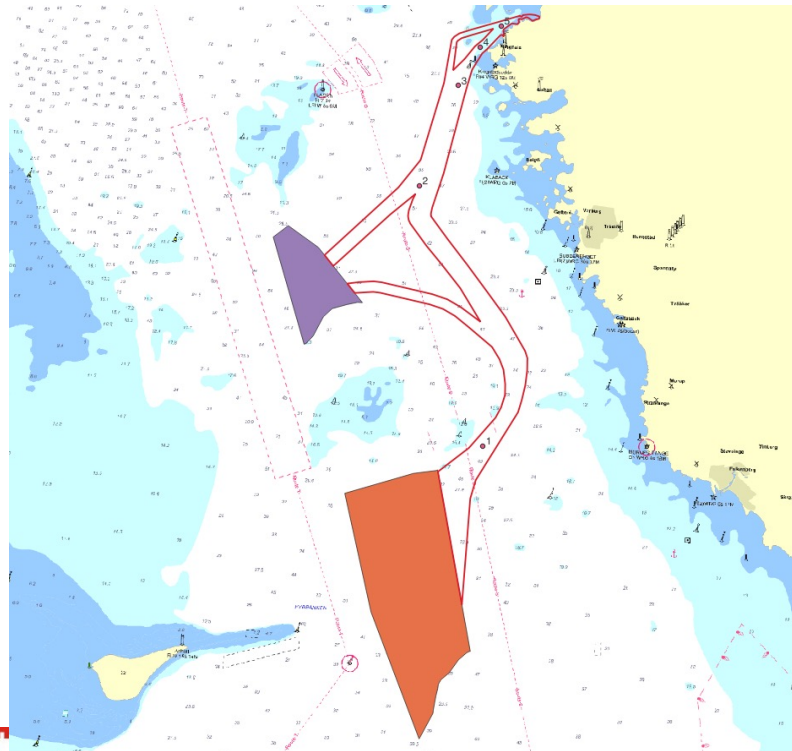
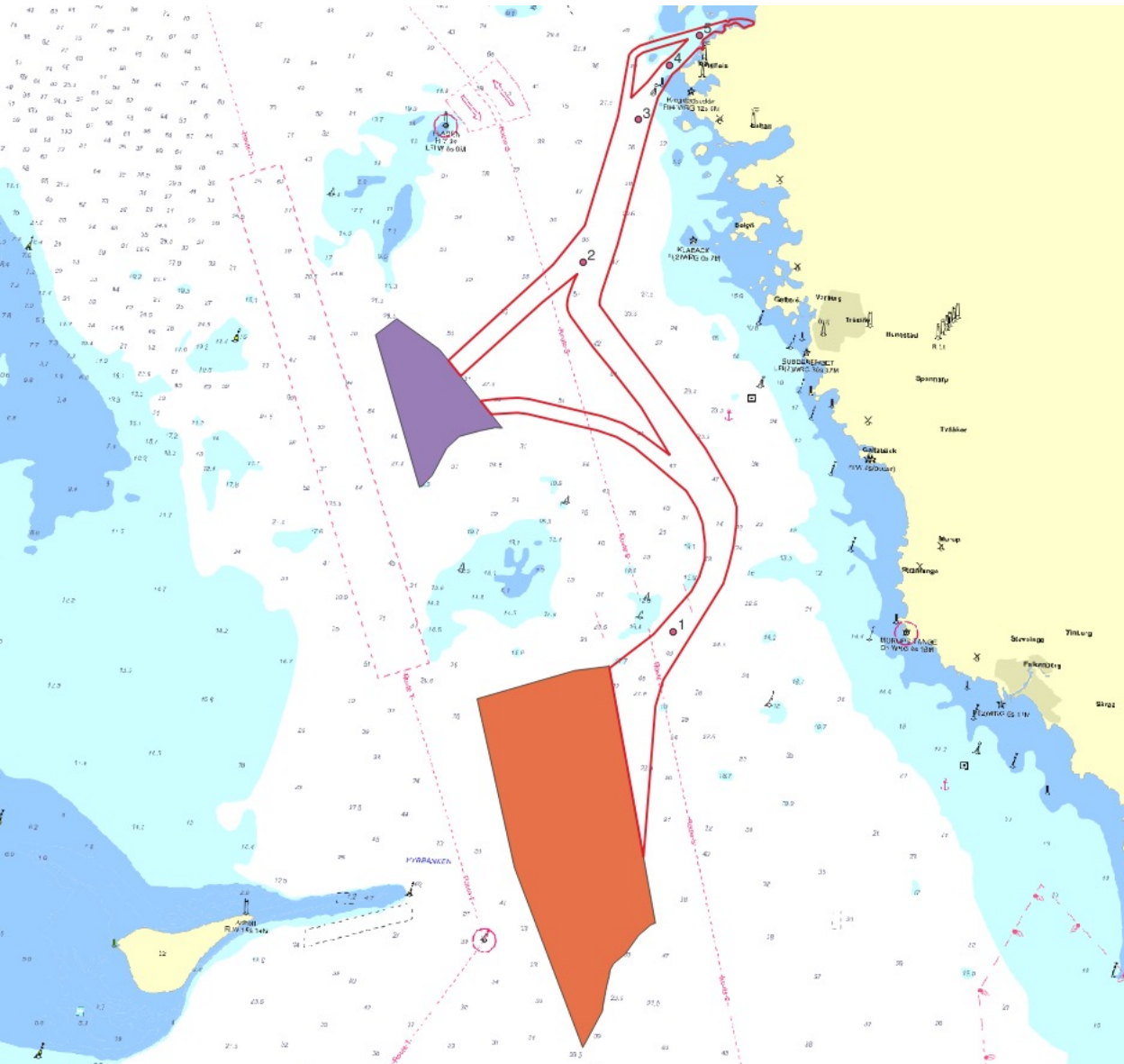


Notice to Mariners Geophysical survey, Galatea-Galene, Kattegatt area



- VESSEL:** M/V NORTHERN WIND, M/V NORTHERN STAR (SHALLOWEST PARTS)
- MANEUVERABILITY:** LIMITED MANEUVERABILITY
- EQUIPMENT:** MULTIBEAM (HULL MOUNTED), SOUND VELOCITY PROFILER (TOWED)
(WITH THE OPTION OF ALSO USING SUB-BOTTOM PROFILER (HULL MOUNTED))
- TIME:** 15TH OF SEPTEMBER TO 10TH OF NOVEMBER – 2022
- AIM:** HYDROGRAPHIC CONDITIONS FOR A POTENTIAL FUTURE WIND FARM





Hull mounted sub-bottom profiler will *maybe* also be used. We are awaiting granting on permit for that and until any decision of that permit application *NO sub-bottom profiler equipment will be used.*

Clinton will send updated notice to mariners IF such permit is granted and received.

MV Northern Wind

Calls sign: 2IOX2

Bridge: +46 8 558 030 39

Email: master-nw@clinton.se

Contact person at Clinton Marine Survey:

Martin Wikmar	CEO	+46 708 79 90 20
Philip Ljungström	Project Manager	+46 708 79 90 26



MV Northern Star

Calls sign: SF7275

Bridge: +46 738 082902

Email: om-northernstar@clinton.se

Contact person at Clinton Marine Survey:

Philip Ljungström Project Manager +46 708 79 90 26

Martin Wikmar CEO +46 708 79 90 20

